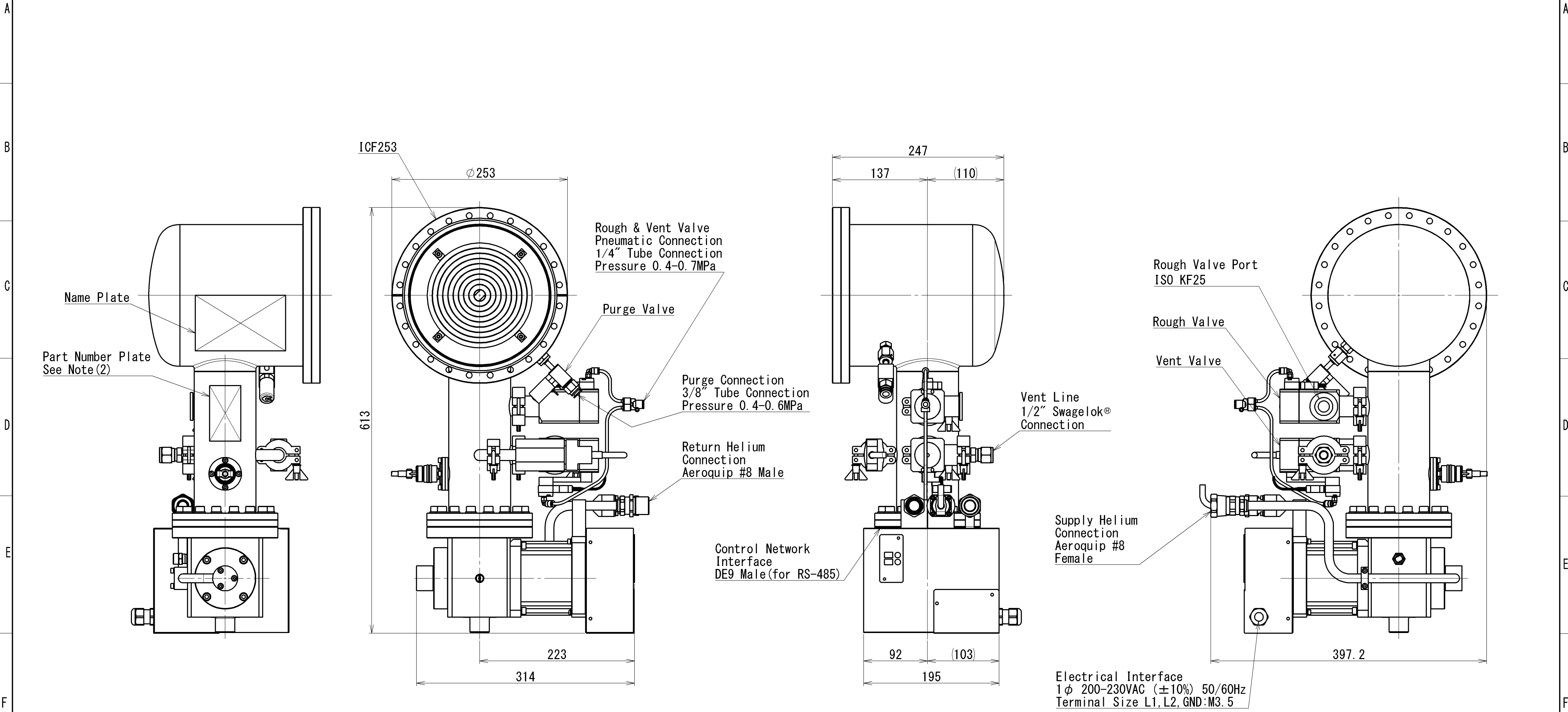


THIS DRAWING IS THE PROPERTY OF SUMITOMO HEAVY INDUSTRIES, LTD. (SHI) AND IS CONFIDENTIAL. IT SHALL NOT BE REPRODUCED, NOR USED FOR ANY OTHER PURPOSE, NOR SUBMITTED TO OUTSIDE PARTIES WITHOUT SHI'S PERMISSION.

NO. PIECE FOR SET	DESCRIPTION	MARK	MATERIAL	MASS kg		STANDARD NO.	MATERIAL SPEC.
				FOR ONE	TOTAL		
					28		



NOTE
 1) CHARGED HELIUM GAS 1.65-1.70MPa.
 2) PART NUMBER PLATE DETAIL.

CRYOPUMP
 KZ-08FCLOA0A3
 Sumitomo Heavy Industries, Ltd.
 MADE IN JAPAN
 SHI PART NO.
 KZ-08FCLOA0A3-0

METRIC

SCALE	1:4	DATE	2021/07/08	Cryopump KZ-08FCLOA0A3 SHI P/N : KZ-08FCLOA0A3-0 DWG. NO. RG20ZH2248AQ
DRAWN	T. Sakamoto	DESIGN	S. Gotanda	
INSPECTION	T. Yatsu	APPROVAL	M. Nakamura	
NUM REV	DESCRIPTION	DESIGN CHANGE No.	DATE	BY
1	NEW DRAWING.		2021/07/08	S. Gotanda

Sumitomo Heavy Industries, Ltd.